

HIGH REACH DEMOLITION

ZAXIS350LC

A P P L I C A T I O N & A T T A C H M E N T



Model Code	ZX350LC-5B
Engine Rated Power	202 kW (271 HP)
Operating Weight	38 500 - 46 900 kg
Attachment Tool Weight	3 000 / 3 500 kg

SPECIFICATIONS

ZAXIS 350LC

ENGINE

Model	Isuzu AL-6HK1X
Type	4-cycle water-cooled, common rail direct injection
Aspiration	Variable geometry turbocharged, intercooled, cooled EGR
Aftertreatment	Muffler filter
No. of cylinders	6
Rated power	
ISO 9249, net	202 kW (271 HP) at 1 900 min ⁻¹ (rpm)
EEC 80/1269, net	202 kW (271 HP) at 1 900 min ⁻¹ (rpm)
SAE J1349, net	202 kW (271 HP) at 1 900 min ⁻¹ (rpm)
Maximum torque	1 080 Nm (110 kgfm) at 1 500 min ⁻¹ (rpm)
Piston displacement	7.790 L
Bore and stroke	115 mm x 125 mm
Batteries	2 x 12 V / 128 Ah

HYDRAULIC SYSTEM

Hydraulic Pumps

Main pumps	3 variable displacement axial piston pumps
Maximum oil flow	2 x 288 L/min 1 x 260 L/min
Pilot pump	1 gear pump
Maximum oil flow	36.4 L/min
Additional pump	1 gear pump
Maximum oil flow	34.0 L/min

Hydraulic Motors

Travel	2 variable displacement axial piston motors
Swing	1 axial piston motor

Relief Valve Settings

Implement circuit	34.3 MPa (350 kgf/cm ²)
Swing circuit	32.4 MPa (330 kgf/cm ²)
Travel circuit	34.3 MPa (350 kgf/cm ²)
Pilot circuit	3.9 MPa (40 kgf/cm ²)
Power boost	38.0 MPa (388 kgf/cm ²)

UPPERSTRUCTURE

Revolving Frame

D-section frame for resistance to deformation.

Swing Device

Axial piston motor with planetary reduction gear is bathed in oil. Swing circle is single-row. Swing parking brake is spring-set/hydraulic-released disc type.

Swing speed	9.7 min ⁻¹ (rpm)
Swing torque	120 kNm (12 240 kgfm)

Operator's Cab (High Reach Demolition Cab)

Independent spacious cab, 1 005 mm wide by 1 675 mm high, conforming to ISO* Standards.

* International Organization for Standardization

UNDERCARRIAGE

Tracks

Heat-treated connecting pins with dirt seals. Hydraulic (grease) track adjusters with shock-absorbing recoil springs.

Numbers of Rollers and Shoes on Each Side

Upper rollers	2
Lower rollers	8
Track shoes	48
Track guards	3

Travel Device

Each track driven by 2-speed axial piston motor. Parking brake is spring-set/hydraulic-released disc type. Automatic transmission system: High-Low.

Travel speeds	High : 0 to 5.0 km/h Low : 0 to 3.2 km/h
---------------------	---

Maximum traction force ... 298 kN (29 200 kgf)

Gradeability

17% (10 degree) continuous

SOUND LEVEL

Sound level in cab according to ISO 6396 LpA 70 dB(A)
External sound level according to ISO 6395 and
EU Directive 2000/14/EC LwA 104 dB(A)

SERVICE REFILL CAPACITIES

Fuel tank	630.0 L
Engine coolant	40.0 L
Engine oil	48.0 L
Swing device	15.7 L
Travel device (each side)	9.2 L
Hydraulic system	340.0 L
Hydraulic oil tank	180.0 L

WEIGHTS AND GROUND PRESSURE

High Reach Demolition 23 m

Equipped with attachment (attachment tool weight: 3 000 kg)

Shoe type	Shoe width	Operating weight	Ground pressure
Triple grouser	600 mm	46 900 kg	88 kPa (0.90 kgf/cm ²)

Demolition 2-Piece Boom

Equipped with attachment (attachment tool weight: 3 500 kg)

Shoe type	Shoe width	Operating weight	Ground pressure
Triple grouser	600 mm	46 200 kg	87 kPa (0.89 kgf/cm ²)

Demolition 2-Piece Boom

Equipped with 1.4 m³ bucket: 1 180 kg (SAE, PCSA heaped)

Shoe type	Shoe width	Operating weight	Ground pressure
Triple grouser	600 mm	43 900 kg	83 kPa (0.85 kgf/cm ²)

Mono Block Boom

Equipped with attachment (attachment tool weight: 3 500 kg)

Shoe type	Shoe width	Operating weight	Ground pressure
Triple grouser	600 mm	40 800 kg	77 kPa (0.78 kgf/cm ²)

Mono Block Boom

Equipped with 1.4 m³ bucket: 1 180 kg (SAE, PCSA heaped)

Shoe type	Shoe width	Operating weight	Ground pressure
Triple grouser	600 mm	38 500 kg	73 kPa (0.74 kgf/cm ²)

BACKHOE ATTACHMENT

Boom and arms are of all-welded, box-section design.

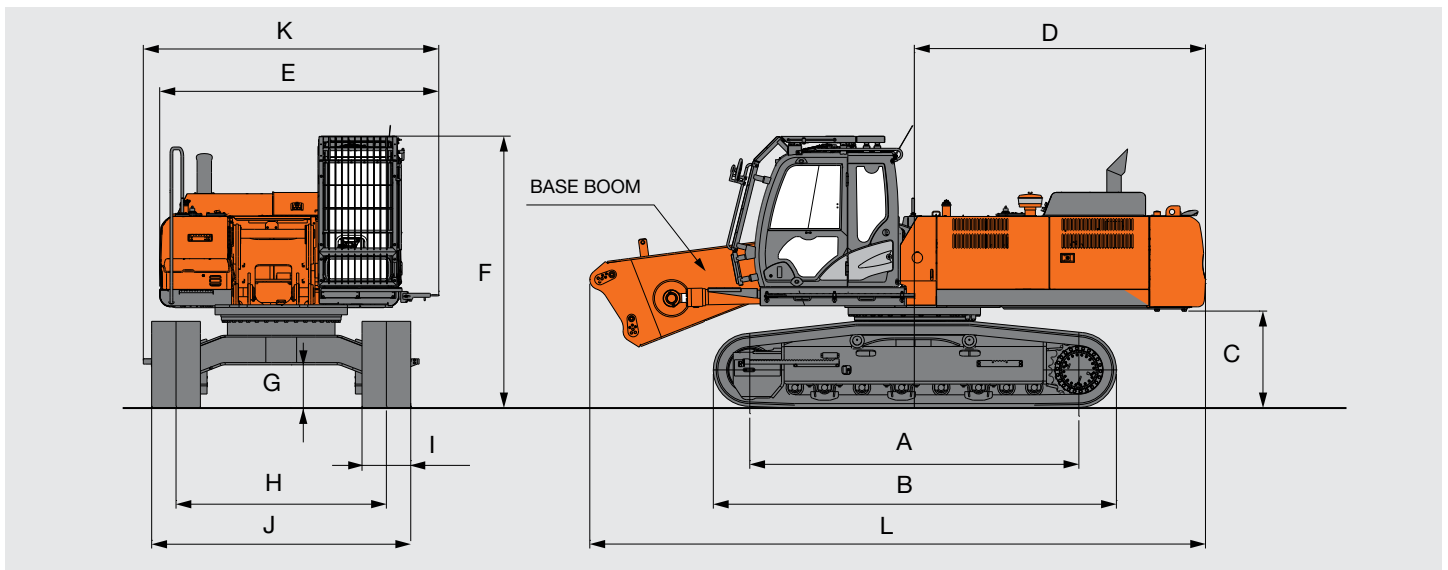
Bucket

Bucket types: 2-piece boom and mono block boom

Capacity	Width		No. of teeth	Weight
	Without side cutters	With side cutters		
1.4 m ³	1 275 mm	1 410 mm	5	1 180 kg

SPECIFICATIONS

DIMENSIONS (BASE MACHINE)



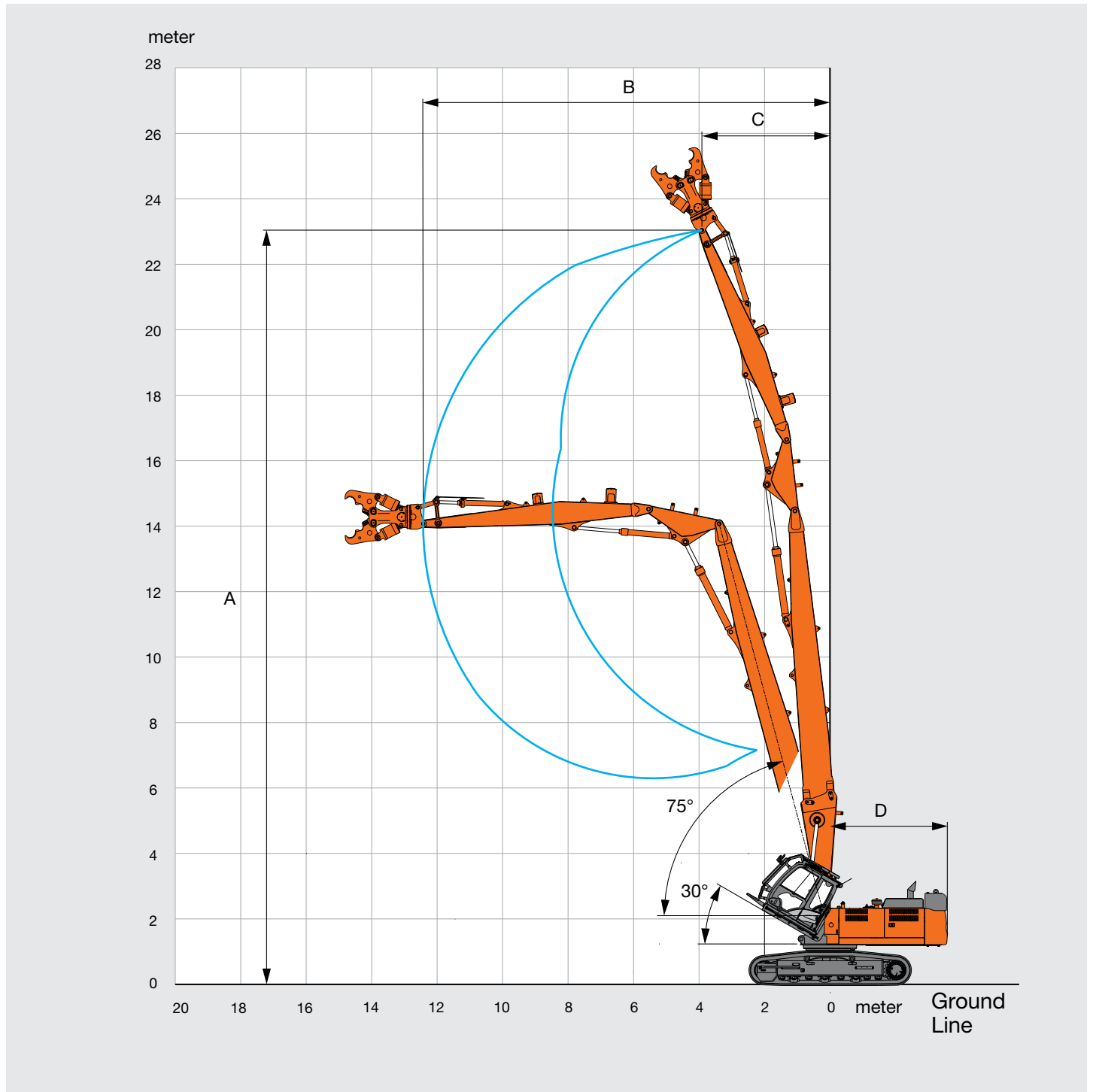
Unit: mm

A	Distance between tumbler	4 050
B	Undercarriage length	4 950
*1C	Counterweight clearance	1 160
D	Rear-end swing radius	3 600
E	Overall width of upperstructure	3 440
F	Overall height of cab	3 350
*1G	Min. ground clearance	500
H	Track gauge	2 590
I	Track shoe width	G 600
J	Undercarriage width	3 190
K	Overall width	3 640
L	Overall length	7 600
*2	Transportation weight	32 800 kg

*1 Excluding track shoe lug *2 Excluding counterweight G: Triple grouser shoe

WORKING RANGES

High Reach Demolition 23 m



Unit: mm

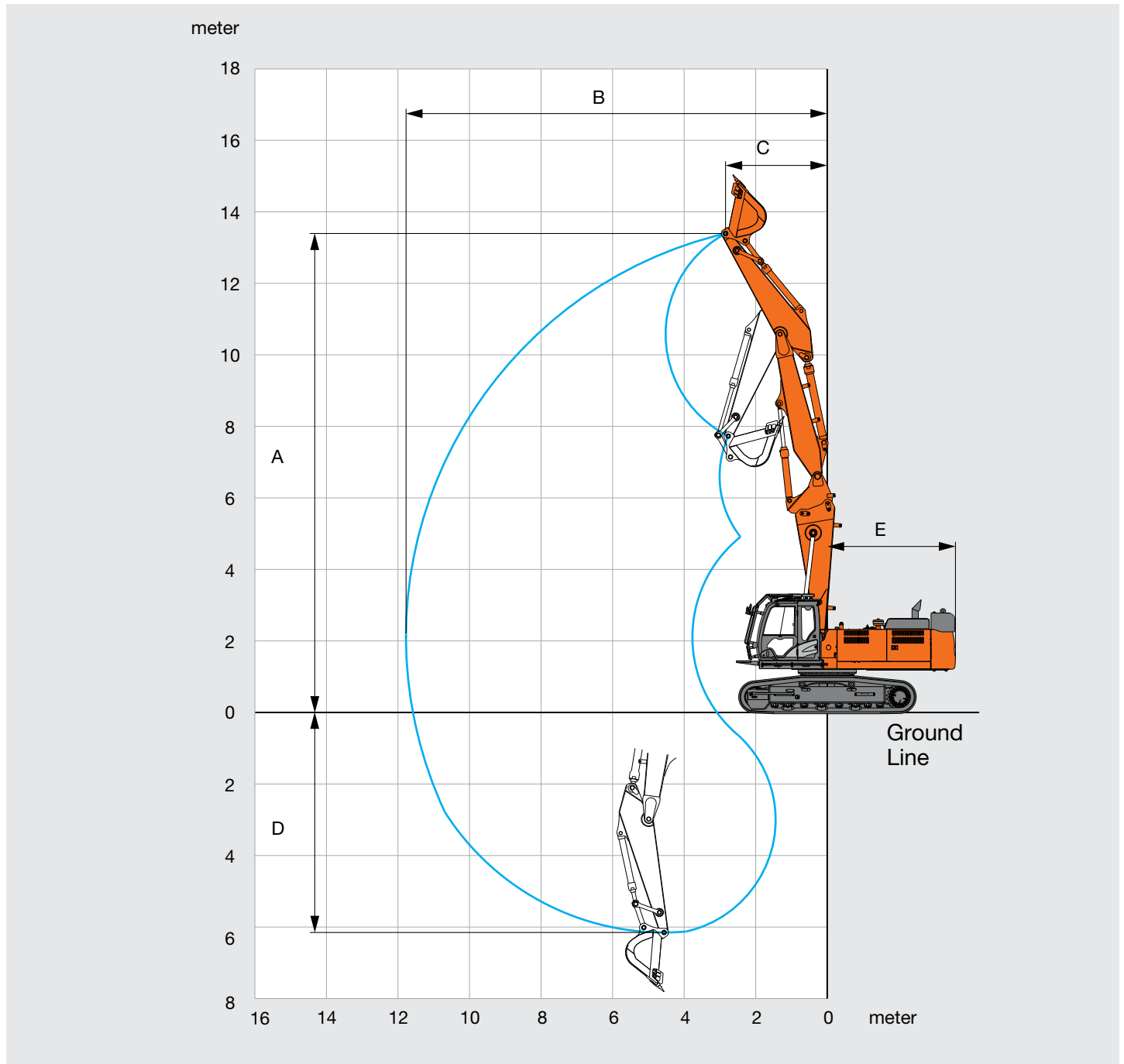
High Reach Demolition 23 m	
A Max. working height (arm top point)	23 040
B Forward limited working reach (arm top point)	12 420
C Reach at max. height (arm top point)	3 910
D Rear-end swing radius	3 600
*Max. tool weight	3 000 kg

*Including quick hitch

SPECIFICATIONS

WORKING RANGES

Demolition 2-Piece Boom



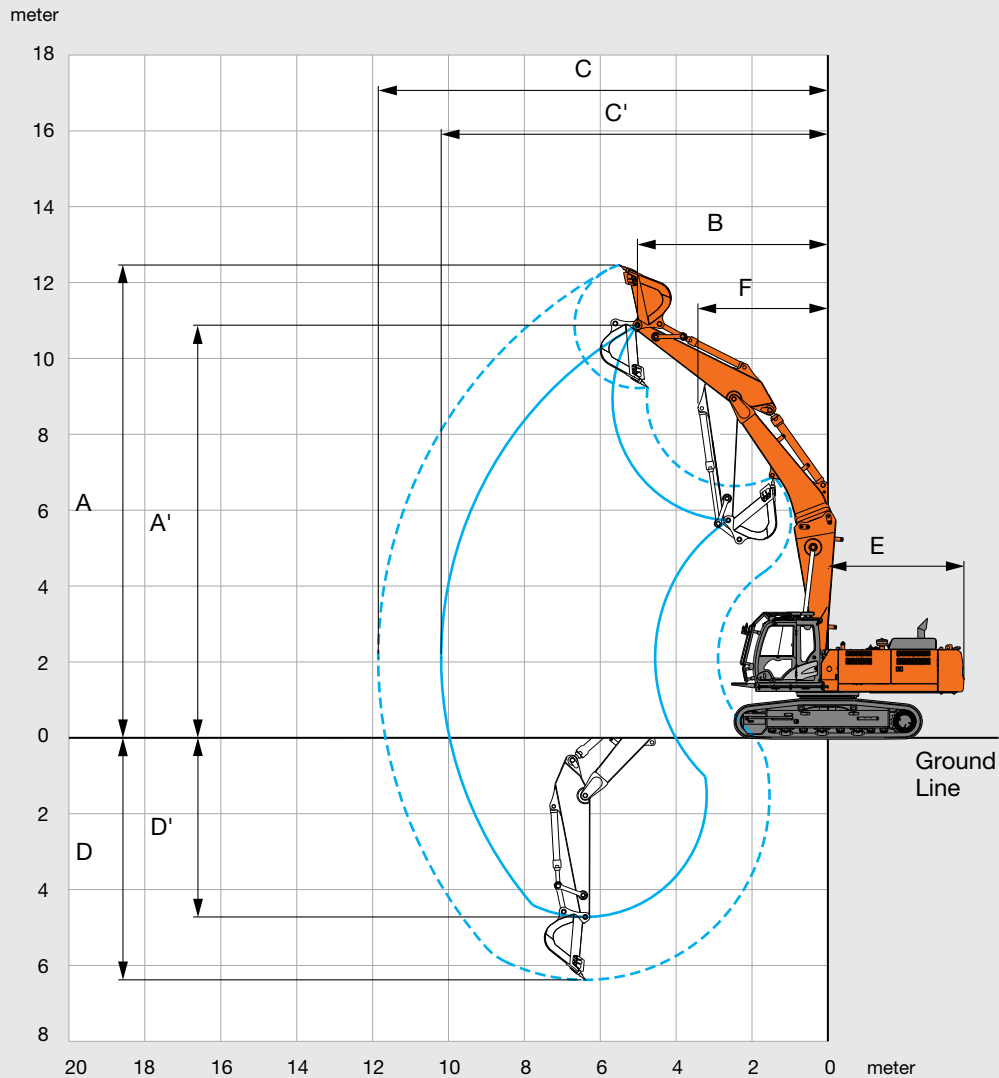
Unit: mm

	Demolition 2-Piece Boom
A Max. working height (arm top point)	13 390
B Max. working reach (arm top point)	11 770
C Reach at max. height (arm top point)	2 850
D Max. working depth (arm top point)	6 150
E Rear-end swing radius	3 600
*Max. tool weight	3 500 kg

*Including quick hitch

WORKING RANGES

Mono Block Boom



Unit: mm

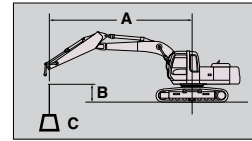
	Mono Block Boom
A Max. digging height (bucket)	12 460
A' Max. working height (arm top point)	10 870
B Reach at max. height (arm top point)	5 030
C Max. digging reach (bucket)	11 840
C' Max. working reach (arm top point)	10 190
D Max. digging depth (bucket)	6 370
D' Max. working depth (arm top point)	4 720
E Rear-end swing radius	3 600
F Min. swing radius (bucket)	3 430
Bucket digging force ISO	246 kN (25 100 kgf)
Arm crowd force ISO	185 kN (18 900 kgf)
*Max. tool weight	3 500 kg

*Including quick hitch

LIFTING CAPACITIES

Metric measure

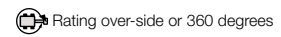
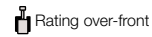
- Notes: 1. Ratings are based on ISO 10567.
 2. Lifting capacity of the ZAXIS Series does not exceed 75% of tipping load with the machine on firm, level ground or 87% of full hydraulic capacity.
 3. The load point is the center line of the bucket pivot mounting pin on the arm.
 4. *Indicates load limited by hydraulic capacity.
 5. 0 m = Ground.



A: Load radius
 B: Load point height
 C: Lifting capacity

For lifting capacities, subtract bucket and quick hitch weight from lifting capacities.

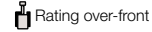
Demolition 2-Piece Boom



Unit : kg

Conditions	Load point height m	Load radius m												At max.reach		
		3.0		4.5		6.0		7.5		9.0		10.5		meter		
Arm: 3.2 m	12.0			*11 800	*11 800	*9 730	*9 730							*9 870	*9 870	6.24
Shoe: 600 mm	10.5			*10 100	*10 100	*9 650	*9 650	*7 880	*7 880					*8 290	7 620	8.19
Counterweight: 11 400 kg	9.0			*9 110	*9 110	*9 630	*9 630	*7 260	*7 260	*7 300	6 520			*7 550	5 770	9.51
	7.5	*9 070	*9 070	*10 700	*10 700	*9 390	*9 390	*7 160	*7 160	*7 150	6 440	*7 170	4 760	*7 170	4 760	10.5
	6.0	*18 600	*18 600	*12 800	*12 800	*9 170	*9 170	*7 510	*7 510	*7 250	6 170	*7 050	4 680	6 590	4 160	11.1
	4.5	*9 350	*9 350	*9 120	*9 120	*9 640	*9 640	*8 280	7 650	*7 610	5 830	7 150	4 520	6 090	3 790	11.5
	3.0			*5 630	*5 630	*8 650	*8 650	*9 230	7 060	*8 100	5 480	6 950	4 340	5 820	3 590	11.7
	1.5			*5 160	*5 160	*6 530	*6 530	*10 200	6 630	8 470	5 210	6 780	4 180	5 750	3 520	11.8
	0 (Ground)			*5 190	*5 190	*7 750	*7 750	*9 970	6 420	*8 250	5 040	6 680	4 080	*5 360	3 590	11.6
	-1.5	*9 180	*9 180	*6 350	*6 350	*9 760	8 800	*8 780	6 390	*7 330	4 990	*5 780	4 080	*4 710	3 800	11.2
	-3.0	*14 700	*14 700	*11 700	*11 700	*8 300	*8 300	*7 540	6 500	*6 240	5 080	*4 270	4 240	*4 270	4 240	10.5
	-4.5	*19 600	*19 600	*12 000	*12 000	*8 490	*8 490	*7 220	6 760	*5 430	5 360			*5 240	*5 240	9.12
	-6.0			*12 700	*12 700									*9 250	*9 250	5.89

Mono Block Boom



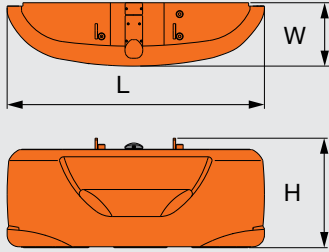
Unit : kg

Conditions	Load point height m	Load radius m								At max.reach		
		4.5		6.0		7.5		9.0		meter		
H-arm: 3.2 m	9.0			*10 400	*10 400					*6 670	*6 670	7.46
Shoe: 600 mm	7.5			*10 800	*10 800	*9 830	7 570			*6 300	5 820	8.63
Counterweight: 7 600 kg	6.0	*14 600	*14 600	*11 800	10 500	*10 200	7 320	8 430	5 330	*6 190	4 870	9.42
	4.5	*17 700	14 900	*13 300	9 750	*10 900	6 930	8 240	5 150	*6 280	4 320	9.91
	3.0	*12 500	*12 500	*14 700	8 920	10 600	6 500	7 990	4 920	*6 530	4 010	10.2
	1.5			14 200	8 260	10 200	6 110	7 750	4 700	6 430	3 890	10.2
	0 (Ground)	*11 700	*11 700	13 800	7 900	9 870	5 850	7 580	4 540	6 540	3 930	9.97
	-1.5	*17 400	11 900	13 600	7 770	9 730	5 720	7 510	4 480	6 950	4 160	9.52
	-3.0	*16 500	12 100	*13 400	7 830	9 760	5 750			7 840	4 690	8.79

TRANSPORTATION

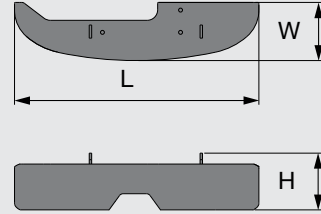
COUNTERWEIGHT

Counterweight



Counterweight		
L: Length	mm	2 950
H: Height	mm	1 260
W: Width	mm	730
Weight	kg	7 620

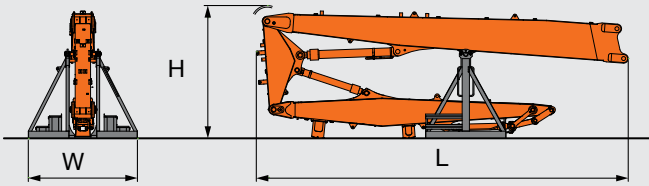
Additional counterweight



Additional counterweight		
L: Length	mm	2 800
H: Height	mm	650
W: Width	mm	670
Weight	kg	3 800

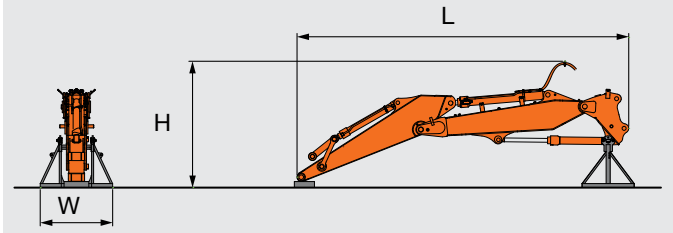
FRONT ATTACHMENT

High reach demolition 23 m



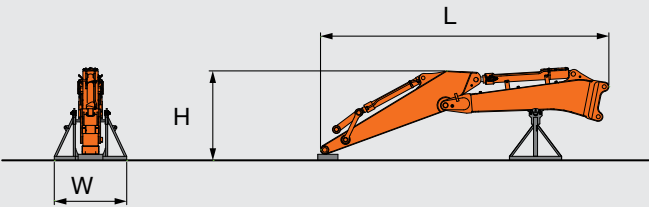
High reach demolition 23 m		
L: Length	mm	9 660
H: Height	mm	3 360
W: Width	mm	2 710
Stand weight	kg	730
Total weight (with stand)	kg	8 010
Total weight (without stand)	kg	7 280

Demolition 2-piece boom



Demolition 2-piece boom		
L: Length	mm	8 380
H: Height	mm	3 140
W: Width	mm	1 800
Stand weight	kg	240
Total weight (with stand)	kg	6 280
Total weight (without stand)	kg	6 090

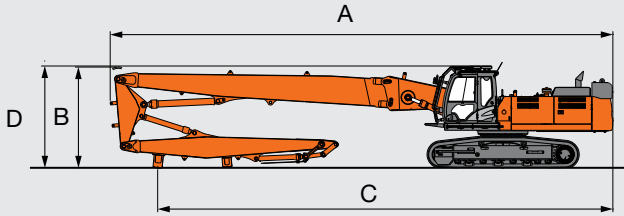
Mono block boom



Mono block boom		
L: Length	mm	7 130
H: Height	mm	2 330
W: Width	mm	1 800
Stand weight	kg	260
Total weight (with stand)	kg	4 650
Total weight (without stand)	kg	4 450

OVERALL

High reach demolition 23 m



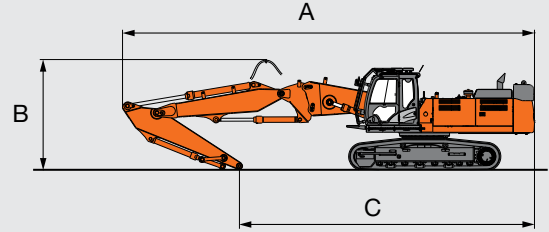
Unit: mm

High reach demolition 23 m

A Transport length	16 400
*B Overall height of front	3 300
C Length on ground	14 850
*D Overall height	3 520

*Including track shoe lug

Demolition 2-piece boom



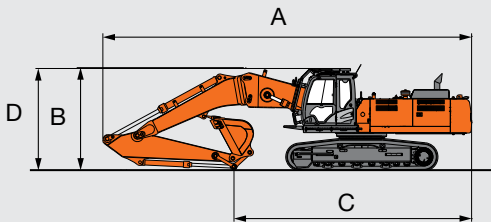
Unit: mm

Demolition 2-piece boom

A Transport length	13 440
*B Overall height (front)	3 630
C Length on ground	9 630

*Including track shoe lug

Mono block boom



Unit: mm

Mono block boom

A Transport length	12 050
*B Overall height of front	3 380
C Length on ground	7 750
*D Overall height	3 520

*Including track shoe lug

EQUIPMENT

●Standard equipment ○Optional equipment

ENGINE

Air cleaner double filter	●
Auto idle system	●
Cartridge-type engine oil filter	●
Dry-type air double filter with evacuator valve (with air filter restriction switch for monitor)	●
Fan guard	●
Fuel pre-filter	●
Isolation-mounted engine	●
Muffler filter	●
Power mode control PWR (Power) ECO (Economy)	●
Pre-cleaner	○
Radiator, oil cooler and intercooler	●
Radiator reserve tank	●
50 A alternator	●

HYDRAULIC SYSTEM

Accessories for breaker	●
Accessories for breaker & crusher	●
Accessories for 2 speed selector	●
Additional pump (34 L/min)	●
Auto power lift	●
Boom mode selector system	●
Control valve with main relief valve	●
Full-flow filter	●
Pilot filter	●
Power boost	●
Suction filter	●
Two extra port for control valve	●
Variable relief valve for breaker & crusher	●
Work mode selector	●

CAB

Additional fuse box	●
Adjustable armrests	●
All-weather sound suppressed steel cab	●
AM-FM radio	●
Ashtray	●
Auto control air conditioner	●
Auto-idle selector	●
AUX. terminal and storage	●
Demolition cab :	
FOPS for excavators compliant cab	●
Intermittent windshield wiper (Parallel type)	●
Laminated round glass (green color) front window	●
Left side windows can be opened	●
OPG top guard fitted Level II (ISO10262)	●
OPG front guard fitted Level II (ISO10262)	●
Pillar-less front window	●
Roof window with wiper and washer	●
Cigarette lighter	●
Drink holder	●
Engine shut-off switch	●
Electric double horn	●
Evacuation hammer	●
Floor mat	●
Front window washer	●
Glove compartment	●
Hot & cool box	●
LED room light with door courtesy	●
LED room light with door courtesy	●
Pilot control shut-off lever	●
Retractable seat belt	●
Rubber radio antenna	●
Seat : Adjustable reclining air suspension with heater	●
Short wrist control levers	●
Storage box	●
Sun visor (front)	○
Sun visor (side)	○
Tilting cab	●
Transparent roof with slide curtain	●
6 fluid-filled elastic mounts	●
12 V power outlet	○

MONITOR SYSTEM

Alarm buzzers: overheat, engine oil pressure, overload, boom angle, swing angle, tilting cab	●
Alarms: overheat, engine warning, engine oil pressure, alternator, minimum fuel level, air filter restriction, work mode, overload, etc	●
Display of meters: water temperature, hour, fuel rate, clock	●
Other displays: work mode, auto-idle, glow, rearview monitor, operating conditions, etc	●

LIGHTS

Additional cab roof rear light	●
Additional working light (Boom right side)	●
Rotating lamp	●
2 cab lights	●
2 working lights	●

UPPER STRUCTURE

Counterweight :	
7 600 kg (Mono block boom)	●
11 400 kg (3 800kg additional + 7 600 kg standard) (High reach demolition and 2-piece boom)	●
Electric fuel refilling pump with auto stop	●
Fuel level float	●
Hydraulic oil level gauge	●
Rear view camera	●
Rear view mirrors (right & left side)	●
Swing parking brake	●
Tool box	●
2 x 128 Ah batteries	●
6.0 mm thickness undercover	●

UNDERCARRIAGE

Bolt-on sprocket	●
Hydraulic track adjuster	●
Reinforced track links with pin seals	●
Travel motor covers	●
Travel parking brake	●
Track undercover	●
Upper and lower rollers	●
3 track guards (each side)	●
600 mm triple grouser shoes	●

FRONT ATTACHMENTS

Centralized lubrication system	●
Damage prevention plate and square bars (Backhoe arm)	●
Dirt seal on all bucket pins	●
Hose rupture valves	●
Storage stand : High reach demolition	●
Mono block boom	●
2-Piece boom	●
Tilt cylinder guard (High reach demolition)	●
Welded bucket link A (2-Piece boom / mono block boom)	●
Welded bucket link A (High reach demolition)	●
1.4 m ³ (ISO heaped) rock bucket (with dual type side shrouds)	○

MISCELLANEOUS

Anti-slip steps and handrails	●
Extinguisher	○
Global e-Service	●
Lockable fuel refilling cap	●
Lockable machine covers	●
Onboard information controller	●
Standard tool kit	●
Theft deterrent system*	○
Travel direction mark on track frame	●

Standard and optional equipment may vary by country, so please consult your Hitachi dealer for details.
* Hitachi Construction Machinery cannot be held liable for theft, any system will just minimize the risk of theft.



Built on the foundation of superb technological capabilities, Hitachi Construction Machinery is committed to providing leading-edge solutions and services to contribute as a reliable partner to the business of customers worldwide.



Hitachi Environmental Vision 2025

The Hitachi Group released the Environmental Vision 2025 to curb annual carbon dioxide emissions. The Group is committed to global production while reducing environmental impact in life cycles of all products, and realizing a sustainable society by tackling three goals — prevention of global warming, recycling of resources, and enhancement of ecosystem.

Reducing Environmental Impact by New ZAXIS

Hitachi makes a green way to cut carbon emissions for global warming prevention according to LCA*. New ZAXIS utilizes lots of technological advances, including the new ECO mode, and Isochronous Control. Hitachi has long been committed to recycling of components, such as aluminum parts in radiators and oil cooler. Resin parts are marked for recycling.

*Life Cycle Assessment – ISO 14040

Prior to operating this machine, including satellite communication system, in a country other than a country of its intended use, it may be necessary to make modifications to it so that it complies with the local regulatory standards (including safety standards) and legal requirements of that particular country. Please do not export or operate this machine outside the country of its intended use until such compliance has been confirmed. Please contact your Hitachi dealer in case of questions about compliance. These specifications are subject to change without notice.

Illustrations and photos show the standard models, and may or may not include optional equipment, accessories, customer installed and modified parts, optional parts and all standard equipment with some differences in color and features. Before use, read and understand the Operator's Manual for proper operation.

